

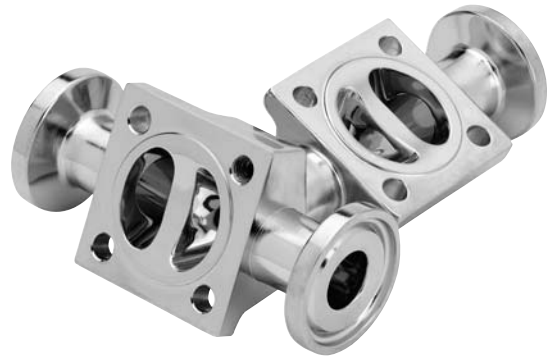
Sterile Access/GMP Combinations

Capabilities

Aquasyn has the unique capability to craft Sterile Access valves with any conceivable valve-to-valve or valve-to-fitting configuration within the industry, in both traditional valve-to-valve or block body styles. Our component stocking system, coupled with specially dedicated machining and polishing, also offers the added benefit of extremely fast lead times. Our fabrication, welding and polishing exhibit inherent quality to meet and exceed industry standards for drainability, minimal dead legs, surface finish and performance

Specials

No other high purity diaphragm valve company can deliver the quality and quantity of specialty products like Aquasyn can. Please call us with any special requirements that you may have, especially when you needed them yesterday!



Features

- Minimized dead legs
- Maximum drainability
- Configured to specific system layout
- Selection sheet available
- Stocked components enable "made-to-order" assemblies
- Short lead times



For complete ordering information and selection chart, please see page 17-18

