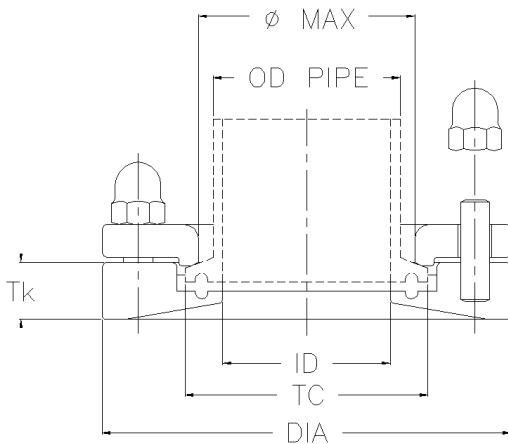


TKC – TANK CONNECTION STANDARD

These Tank Connection features a very compact design that allow the installation of any product with TRI CLAMP ends onto any type of vessel. (tanks reactors, fermenters) The TKC can be fitted and used for sight glasses, sampling devices, manometer, and spray-ball installation. Once installed, the TKC is flush with the inside tank wall that guaranties zero dead leg and cleanability.

Machined from Solid barstock AISI 316L, and available as standard in a size range from 3/4" to 4".



Approval according to PED 97/23/EC

Dimensions table for Clamp Standard BS 4825 pipe standard according ASTM A270

PART NUMBER	TC	ID	OD pipe	φ max	DIA	Tk std	Tk 1	Tk 2	Tk 3	Bolts
TKC-1/2"	25,0	9,4	12,7	20,0	55,0	15,0	25,0	38,0	51,0	4 x M6
TKC-3/4"	25,0	15,75	19,05	20,0	55,0	15,0	25,0	38,0	51,0	4 x M8
TKC-1"	50,4	22,1	25,4	45,0	85,0	17,0	25,0	38,0	51,0	4 x M8
TKC-1 1/2"	50,4	34,8	38,1	45,0	85,0	17,0	25,0	38,0	51,0	4 x M8
TKC-2"	64,0	47,5	50,8	57,0	100,0	17,0	25,0	38,0	51,0	4 x M8
TKC-2 1/2"	77,5	60,2	63,5	71,0	112,0	17,0	25,0	38,0	51,0	4 x M8
TKC-3"	91,0	72,9	76,2	85,0	130,0	20,0	25,0	38,0	51,0	6 x M8
TKC-4"	119,0	97,6	101,6	113,0	170,0	20,0	25,0	38,0	51,0	8 x M8

Dimensions table for Clamp Standard DIN 32676 tube standard according DIN 11850 Row 1-3

PART NUMBER	TC	ID	OD pipe	φ max	DIA	Tk std	Tk 1	Tk 2	Tk 3	Bolts
TKC-DIN 10	34,0	10,0	12,0 - 14,0	23,5	70,0	15,0	25,0	38,0	51,0	4 x M6
TKC-DIN 15	34,0	16,0	18,0 - 20,0	23,5	70,0	15,0	25,0	38,0	51,0	4 x M6
TKC-DIN 20	34,0	20,0	22,0 - 24,0	45,0	70,0	15,0	25,0	38,0	51,0	4 x M8
TKC-DIN 25	50,4	26,0	28,0 - 30,0	45,0	85,0	17,0	25,0	38,0	51,0	4 x M8
TKC-DIN 32	50,4	32,0	34,0 - 36,0	45,0	85,0	17,0	25,0	38,0	51,0	4 x M8
TKC-DIN 40	50,4	38,0	40,0 - 42,0	45,0	85,0	17,0	25,0	38,0	51,0	4 x M8
TKC-DIN 50	64,0	50,0	52,0 - 54,0	71,0	100,0	17,0	25,0	38,0	51,0	4 x M8
TKC-DIN 65	91,0	66,0	70,0	85,0	130,0	17,0	25,0	38,0	51,0	4 x M8
TKC-DIN 80	106,0	81,0	85,0	93,0	146,0	17,0	25,0	38,0	51,0	4 x M8
TKC-DIN 100	119,0	100,0	104,0	113,0	170,0	20,0	25,0	38,0	51,0	6 x M8



Dimensions table for Clamp Standard ISO 2852 tube standard according ISO 1127 serie 1

PART NUMBER	TC	ID	OD pipe	ϕ max	DIA	Tk std	Tk 1	Tk 2	Tk 3	Bolts
TKC-ISO 8	25,0	10,2	13,5	20,0	55,0	15,0	25,0	38,0	51,0	4 x M6
TKC-ISO 10	34,0	14,0	17,2	23,5	70,0	15,0	25,0	38,0	51,0	4 x M6
TKC-ISO 15	34,0	18,1	21,3	23,5	70,0	15,0	25,0	38,0	51,0	4 x M6
TKC-ISO 20	34,0	23,7	26,9	45,0	85,0	15,0	25,0	38,0	51,0	4 x M8
TKC-ISO 25	50,4	29,7	33,7	45,0	85,0	17,0	25,0	38,0	51,0	4 x M8
TKC-ISO 32	64,0	38,4	42,4	57,0	100,0	17,0	25,0	38,0	51,0	4 x M8
TKC-ISO 40	64,0	44,3	48,3	57,0	100,0	17,0	25,0	38,0	51,0	4 x M8
TKC-ISO 50	77,5	56,3	60,3	71,0	112,0	17,0	25,0	38,0	51,0	4 x M8
TKC-ISO 65	91,0	72,1	76,1	85,0	130,0	17,0	25,0	38,0	51,0	4 x M8
TKC-ISO 80	106,0	84,3	88,9	93,0	146,0	20,0	25,0	38,0	51,0	6 x M8
TKC-ISO 100	130,0	109,7	114,3	117,0	170,0	20,0	25,0	38,0	51,0	8 x M8

Dimensions table for tube standard according SMS 3008

PART NUMBER	TC	ID	OD pipe	ϕ max	DIA	Tk std	Tk 1	Tk 2	Tk 3	Bolts
TKC-SMS 12	25,0	10,0	12,0	20,0	55,0	15,0	25,0	38,0	51,0	4 x M6
TKC-SMS 18	25,0	15,0	18,0	20,0	55,0	15,0	25,0	38,0	51,0	4 x M8
TKC-SMS 25	50,4	22,6	25,0	45,0	85,0	17,0	25,0	38,0	51,0	4 x M8
TKC-SMS 38	50,4	35,6	38,0	45,0	85,0	17,0	25,0	38,0	51,0	4 x M8
TKC-SMS 51	64,0	48,6	51,0	57,0	100,0	17,0	25,0	38,0	51,0	4 x M8
TKC-SMS-64	77,5	60,3	63,5	71,0	112,0	17,0	25,0	38,0	51,0	4 x M8
TKC-SMS 76	91,0	72,9	76,1	85,0	130,0	20,0	25,0	38,0	51,0	6 x M8
TKC-SMS 102	119,0	97,6	101,6	113,0	170,0	20,0	25,0	38,0	51,0	8 x M8

PRESSURE DIRECTIVE

The TK-Connection are designed according to **PED 97/23/CE** and F.E.M. (Finite Element Method) calculated, approved, and certified by notified body

Operating conditions:

Design Pressure: -1 bar to 7 barg (-14.5 psi to 101.5 psi)
 Design Temperature: -80°C to 200°C (-112°F to 392°F)
 Medium: Fluids group 1 and 2
 Equipment category: I - IV

Material:

Welding flange: ASTM A 479 / ASTM A 182 - 316L
 Locking ring: ASTM A 479 / ASTM A 182 - 316L
 Bolts: ASTM A 193 B8 – 304
 Nut: ASTM A 194 B8 – 304

Surface Finish:

Product contact surface finish: Ra ≤0.6 μm



Documentation:

The following documentations are available:

- PED conformity certificate
- welding guideline
- 3.1B certificate on wetted parts

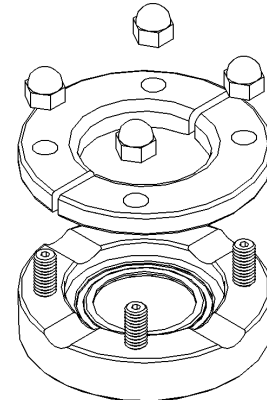
Marking:

Material, Heat No., order number, manufacturing date, and part number for full traceability

Note:

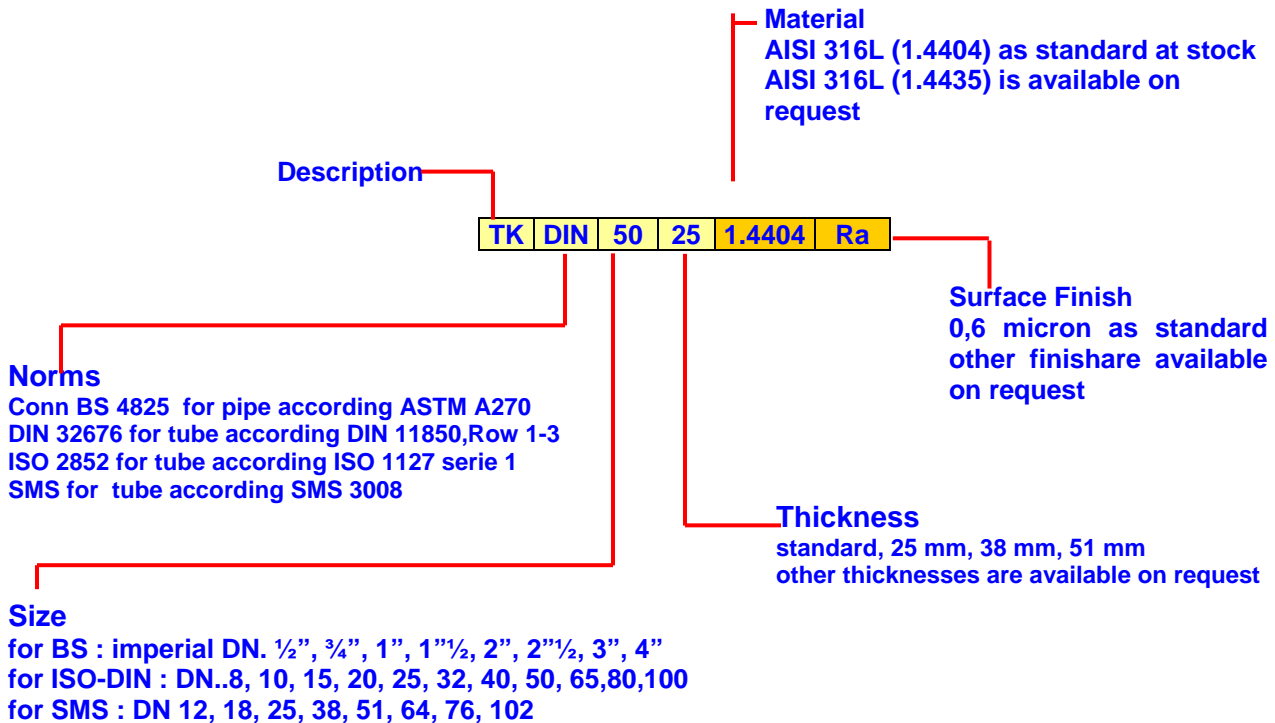
The applied gasket (not included) may have different design temperature and/or pressure limits than the TK-Conn.

The weakest component in the assembled product determines the maximum design temperature and pressure limits.



ORDERING INFORMATION

To specify the part, start with the product description and select the additional options as shown below:



Get the information you need at: sales@cskbio.com
The specifications or design are subject to change without prior notice.