



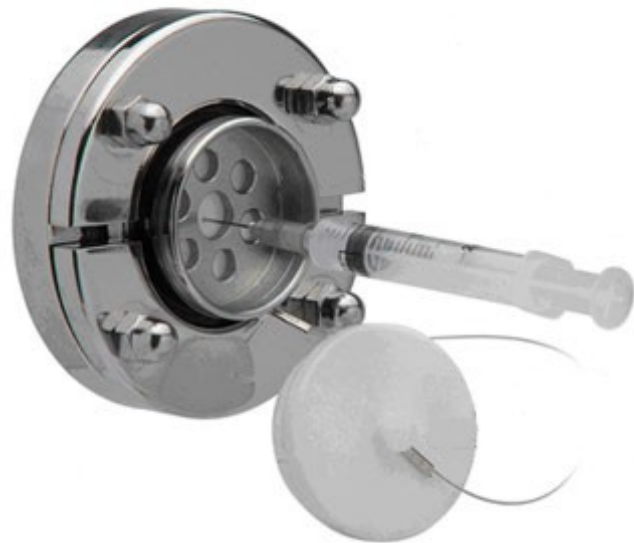
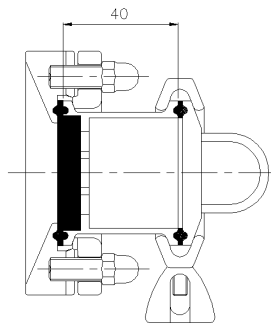
TKC SYRINGE

TKC- Syringe for clamp standard is designed according to BS 4825 Flush mount hygienic device features a compact design that allow taking product samples from a tank or in-line in pharmaceutical process. Before sampling, the port may be sterilized with alcohol, and then sampling takes place by simply penetrating the special silicone membrane with a hypodermic syringe.

Available for this application in 1 1/2" size only

Advantages:

- Cost reduction
- No product entrapment
- Easy to use and clean/sterilize
- Autoclavable
- Customized for your needs



**1 1/2" TK-Connection fitted with TK-Syringe
for Tank installation**

Max. Operating conditions:

Design pressure TK holder: 7 bar
 Design temperature TKC holder: 200°C
 Max pressure sample liquid: 0.5 barg
 Max sampling temperature: 95°C
 Not recommended for vacuum applications

Material:

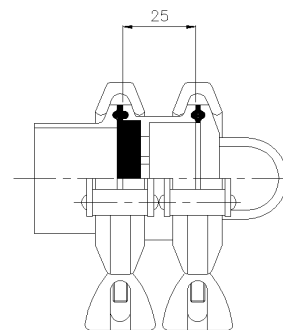
Welding flange: ASTM A 479 / ASTM A 182 - 316L
 Locking ring: ASTM A 479 / ASTM A 182 - 316L
 Syringable gasket white silicone 60 shore FDA compliance
 Clamp assembly AISI 304 stainless steel

Surface Finish:

Product contact surface finished: Ra ≤0.6 μm

Marking:

Marked with Heat No., order number, manufacturing date, and part number for full traceability



More information need at: sales@cskbio.com
 The specifications or design are subject to change without prior notice.