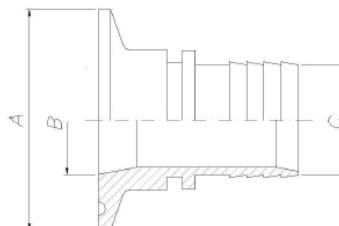


STAINLESS STEEL FITTINGS TRI-CLAMP DIN

TRI-CLAMP DIN			
A (mm)	B (mm)	C (mm)	PART NR.
25	6,0	6	CSK021276060625
34	8,0	8	CSK021276080834
50	8,0	8	CSK021276080850
25	10,0	10	CSK021276101025
34	10,0	10	CSK021276101034
50	10,0	10	CSK021276101050
25	10,0	13	CSK021276101325
34	10,0	13	CSK021276101334
25	13,0	13	CSK021276131325
34	13,0	13	CSK021276131334
50	13,0	13	CSK021276131350
25	16,0	16	CSK021276161625
34	16,0	16	CSK021276161634
50	16,0	16	CSK021276161650
25	16,0	20	CSK021276162025
50	16,0	20	CSK021276162050
34	18,0	18	CSK021276181834
50	18,0	18	CSK021276181850
34	20,0	20	CSK021276202034
50	20,0	20	CSK021276202034
50	22,5	18	CSK021276221850
50	22,5	20	CSK021276222050
50	22,5	25	CSK021276222550
64	22,5	25	CSK021276222564
50	29,0	32	CSK021276293250
64	32,0	32	CSK021276323264
50	35,5	20	CSK021276352050
50	35,5	25	CSK021276352550
50	35,5	38	CSK021276353850
64	35,5	38	CSK021276353864
64	38,0	38	CSK021276383864
64	48,5	50	CSK021276485064
77	60,3	63	CSK021276606377
91	72,9	76	CSK021276737691
119	101,0	102	CSK021276101119

CLAMP



CLAMP 90°

