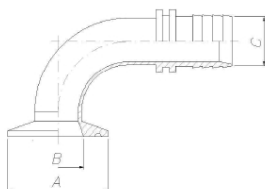
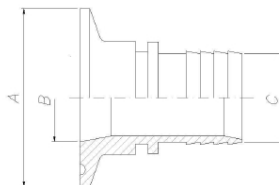


## STAINLESS STEEL FITTINGS TRI-CLAMP IMPERIAL

TRI-CLAMP IMPERIAL						
DN	A		B	C		PART NR.
(inch)	(mm)	(inch)	(mm)	(mm)	(inch)	
1/2	25		9.5	6.35	1/4	CSK021277100625
3/4	25		15.8	6.35	1/4	CSK021277160625
1/2	25		9.5	9.52	3/8	CSK021277101025
3/4	25		15.8	9.52	3/8	CSK021277161025
1/2	25		9.5	12.7	1/2	CSK011277101325
3/4	25		15.8	12.7	1/2	CSK021277161325
1/2	25		9.5	19.05	3/4	CSK021277101925
3/4	25		15.8	19.05	3/4	CSK021277161925
1	50	2	22.1	6.35	1/4	CSK021277220650
1 1/2	50	2	34.8	6.35	1/4	CSK021277350650
1	50	2	22.1	9.52	3/8	CSK021277221050
1 1/2	50	2	34.8	9.52	3/8	CSK021277351050
1	50	2	22.1	12.7	1/2	CSK021277221250
1 1/2	50	2	34.8	12.7	1/2	CSK021277351250
1	50	2	22.1	19.05	3/4	CSK021277221950
1 1/2	50	2	34.8	19.05	3/4	CSK021277351950
1	50	2	22.1	25.4	1	CSK021277222550
1 1/2	50	2	34.8	25.4	1	CSK021277352550
2	64	2 1/2	47.5	25.4	1	CSK021277482564
1 1/2	50	2	34.8	38.1	1 1/2	CSK021277353850
2	64	2 1/2	47.5	38.1	1 1/2	CSK021277483864
2	64	2 1/2	47.5	50.8	2	CSK021277485064
2 1/2	77	3	60.2	50.8	2	CSK021277605077
2 1/2	77	3	60.2	63.5	2 1/2	CSK021277606377
3	91	3 9/16	72.9	63.5	2	CSK021277736391
3	91	3 9/16	72.9	76.2	3	CSK021277737691
4	119	4 11/16	97.4	101.6	4	CSK021277102119

**CLAMP**

**CLAMP 90°**

**CLAMP 45°**
